

## REC5625

### Intel i7/i5 Processor Fan-less Embedded Controller

REC5625 is a ruggedized industrial solution, which provides extreme reliable functions, scalable processing efficiency, stackable chassis extension, rich I/O features and flexible industrial design. Ruggcore fan-less embedded computer supports socket 989 with Intel Core 2 Duo i7/i5 processor, and DDRIII 800/1066 memory up to 4GB. In addition, the housing of Ruggcore series takes aluminum chassis to construct a strong mechanical structure for any harsh industrial applications.

#### Key Features

- Intel Arrandale Processor Intel Core™ i7/i5 (Socket-989) + QM57
- SODIMM DDRIII 800/1066 Memory, 4GB
- Support Display Port
- Fan-less
- Wide Input Voltage DC 9~36V
- Ruggedized Housing Design

#### Application

- Machine Controller
- Factory Automation
- Marine
- Transportation



### Specifications

Preliminary

<b>Model Number</b>	<b>REC5625</b>
<b>Description</b>	Intel i7/i5 Processor Fan-less Embedded Controller
<b>Processor</b>	Intel Arrandale Processor Intel i7/i5 (Socket-989)
<b>Chip Set</b>	Intel QM57
<b>System Memory</b>	DDRIII 800/1066 Memory up to 4GB
<b>Ethernet</b>	10/1000/1000Base-TX x 2 (Intel® 82577LM and Intel® 82574L)
<b>Storage</b>	SATA II HDD x 1, Type II Compact Flash x 1
<b>Audio</b>	Line-Out, MIC-in
<b>I/O Interface- Front</b>	Audio (Line-out, MIC-in) USB x2, COMx2 (RS232), DC-In
<b>I/O Interface- Rear</b>	RJ45 x2, USB x4, COMx2 (RS232 x1, RS232/422/485 x1) DVI-I, VGA , Display Port
<b>BIOS</b>	Award Plug & Play BIOS – 8 MB ROM
<b>Wake On LAN</b>	Yes
<b>Extension Interface</b>	Mini PCI-E
<b>Power Supply</b>	DC Input voltage: 9V~ 36V
<b>Display</b>	Supports CRT / Display port simultaneous display
<b>Chip Set</b>	Intel® CPU integrated VGA, Integrated Graphics
<b>Memory</b>	Shared system memory up to 512 MB
<b>Resolutions</b>	Up to 2048 x 1536 (QXGA) for CRT
<b>Mechanical</b>	
<b>Construction</b>	Rugged Aluminum Alloy Chassis
<b>Mounting</b>	Wall mount, Desktop, DIN Rail
<b>Dimension</b>	262(W) x 86(H) x 184 (D) mm
<b>Net Weight</b>	4.5kg
<b>Environmental</b>	
<b>Operating Temperature</b>	-15°C ~ 45°C (5°F ~ 113°F)
<b>Storage Temperature</b>	-20°C~70°C (-4°F~158°F)
<b>Operating Humidity</b>	5~90% @ 40°C, non-condensing
<b>Vibration</b>	1g rms / 5~500Hz / random operation
<b>Shock</b>	20G peak acceleration (11msec. duration)
<b>Certification</b>	CE/FCC

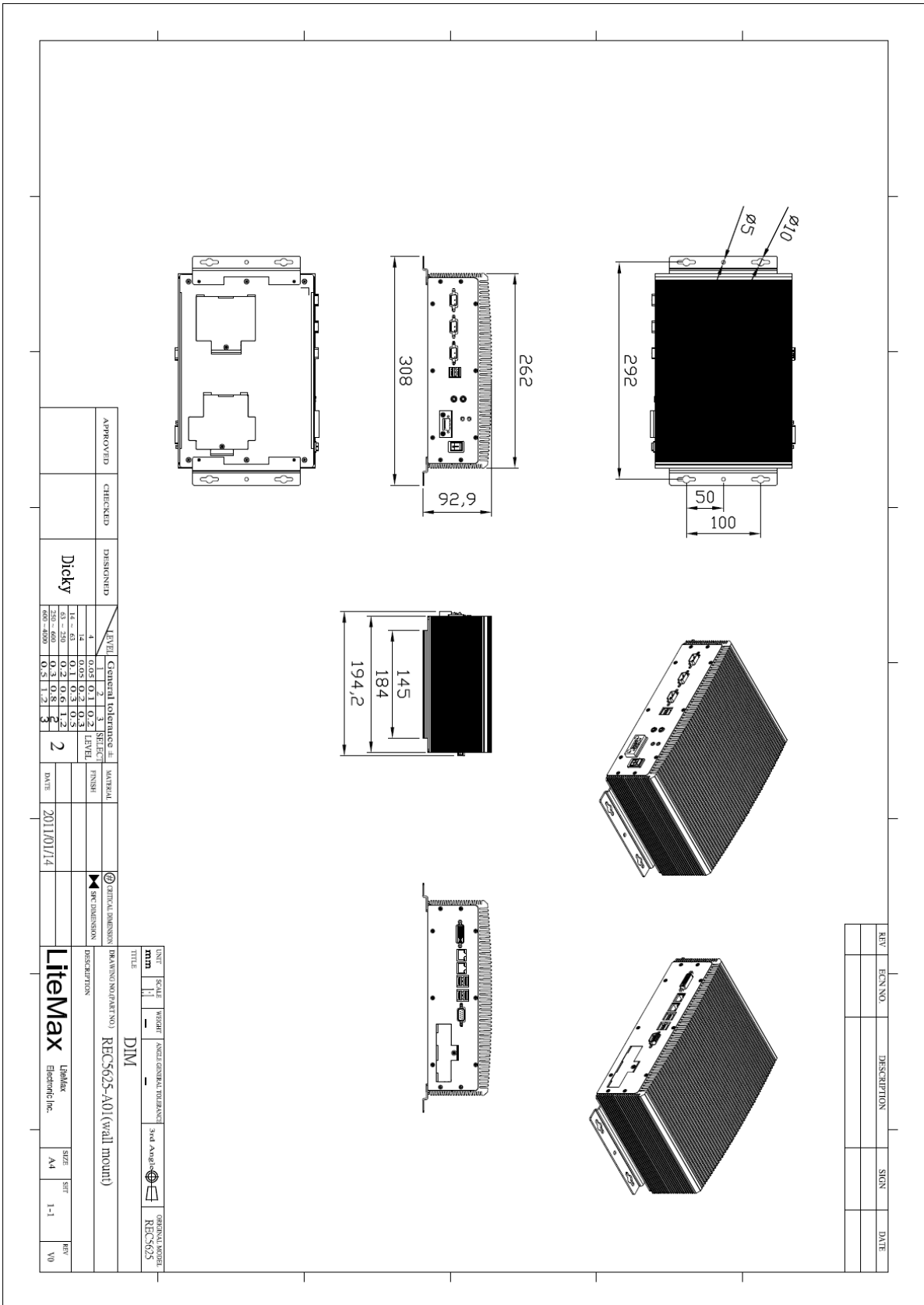
Specifications are subject to change without notice.

All brands or product names are trademarks or registered trademarks of their respective companies.

# Mechanical Drawing

## Outline Dimensions

Unit:mm





### Ordering Information

Part Number	Description
<a href="#">REC5625-A01</a>	Intel CoreTMi7/i5/P4500.Fanless Barebone System with.DC9~36V input,2GB RAM.GbE*2,DVI-1*1,USB*6,COM*4.CF slot,HDD Bay

### Optional Accessories

Part Number	Description
840612073000	ADAPTER,12V,7.0A84W.LE-0316B120084.NLE-0316BS12V-AE
810501201000	PS/2 Y Cable for Keyboard and Mouse
810218001020	DVI-I to DVI-D & DVI-I to VGA Port Y Cable
810618301015	Power Cable USA Type
810618301115	Power Cable UK Type
810618301145	Power Cable Australia Type
810618301070	Power Cable Europe Type