

REC5625

Intel i7/i5 Processor Fan-less Embedded Controller

REC5625 is a ruggedized industrial solution, which provides extreme reliable functions, scalable processing efficiency, stackable chassis extension, rich I/O features and flexible industrial design. Ruggcore fan-less embedded computer supports socket 989 with Intel Core 2 Duo i7/i5 processor, and DDRIII 800/1066 memory up to 4GB. In addition, the housing of Ruggcore series takes aluminum chassis to construct a strong mechanical structure for any harsh industrial applications.

Key Features

- Intel Arrandale Processor Intel Core™ i7/i5 (Socket-989) + QM57
- SODIMM DDRIII 800/1066 Memory, 4GB
- Support Display Port
- Fan-less
- Wide Input Voltage DC 9~36V
- Ruggedized Housing Design

Application

- Machine Controller
- Factory Automation
- Marine
- Transportation



Specifications

Preliminary

Model Number	REC5625
Description	Intel i7/i5 Processor Fan-less Embedded Controller
Processor	Intel Arrandale Processor Intel i7/i5 (Socket-989)
Chip Set	Intel QM57
System Memory	DDRIII 800/1066 Memory up to 4GB
Ethernet	10/1000/1000Base-TX x 2 (Intel® 82577LM and Intel® 82574L)
Storage	SATA II HDD x 1, Type II Compact Flash x 1
Audio	Line-Out, MIC-in
I/O Interface- Front	Audio (Line-out, MIC-in) USB x2, COMx2 (RS232), DC-In
I/O Interface- Rear	RJ45 x2, USB x4, COMx2 (RS232 x1, RS232/422/485 x1) DVI-I, VGA , Display Port
BIOS	Award Plug & Play BIOS – 8 MB ROM
Wake On LAN	Yes
Extension Interface	Mini PCI-E
Power Supply	DC Input voltage: 9V~ 36V
Display	Supports CRT / Display port simultaneous display
Chip Set	Intel® CPU integrated VGA, Integrated Graphics
Memory	Shared system memory up to 512 MB
Resolutions	Up to 2048 x 1536 (QXGA) for CRT
Mechanical	
Construction	Rugged Aluminum Alloy Chassis
Mounting	Wall mount, Desktop, DIN Rail
Dimension	262(W) x 86(H) x 184 (D) mm
Net Weight	4.5kg
Environmental	
Operating Temperature	-15°C ~ 45°C (5°F ~ 113°F)
Storage Temperature	-20°C~70°C (-4°F~158°F)
Operating Humidity	5~90% @ 40°C, non-condensing
Vibration	1g rms / 5~500Hz / random operation
Shock	20G peak acceleration (11msec. duration)
Certification	CE/FCC

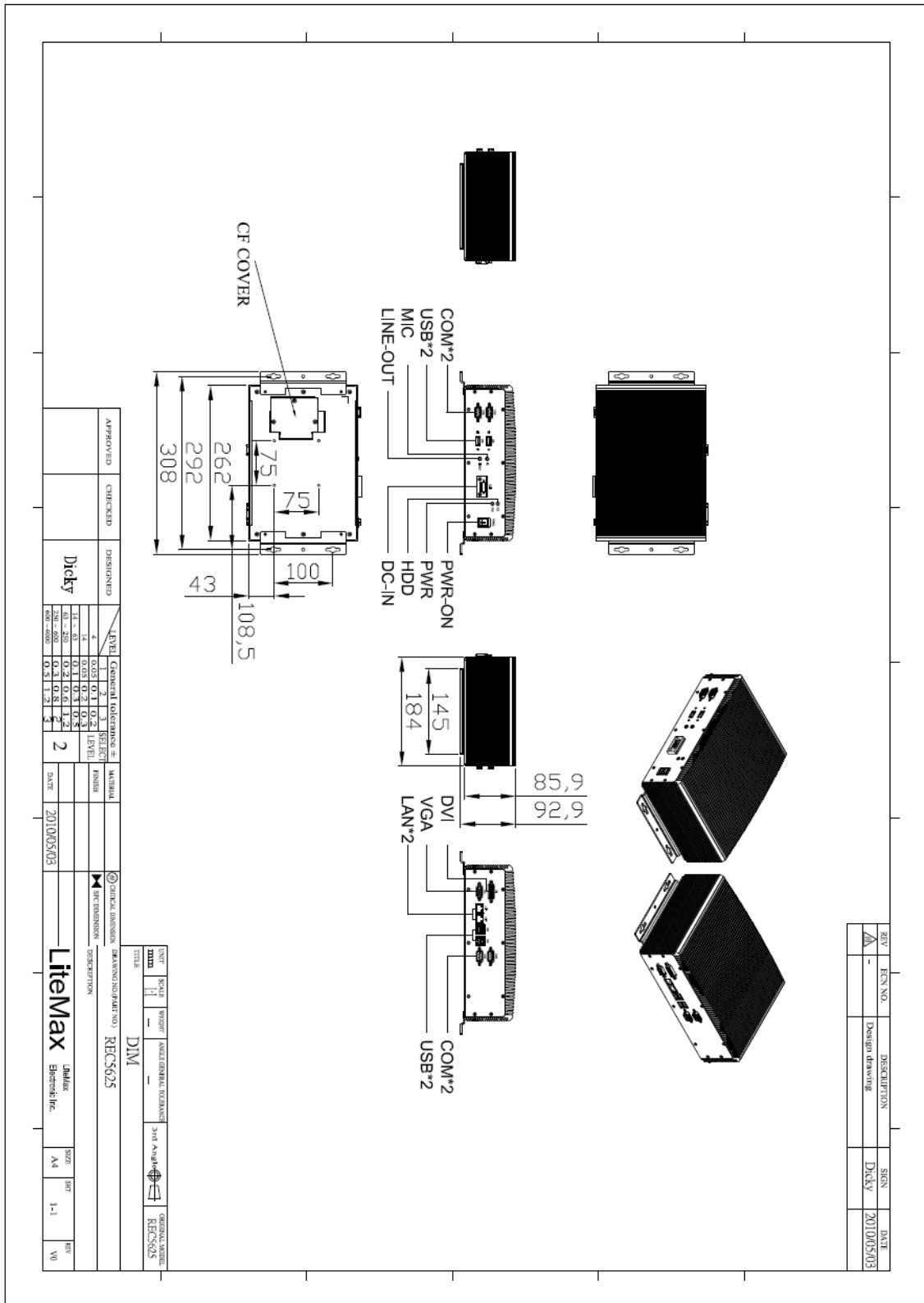
Specifications are subject to change without notice.

All brands or product names are trademarks or registered trademarks of their respective companies.

Mechanical Drawing

Outline Dimensions

Unit:mm





Ordering Information

Optional Accessories
