

## REC3425

### Intel Core 2 Duo Fan-less Embedded Controller

REC3425 is a ruggedized industrial solution, which provides extreme reliable functions, scalable processing efficiency, stackable chassis extension, rich I/O features and flexible industrial design. Ruggcore fan-less embedded computer supports Intel Core 2 Duo/ Celeron M processor with 533/667MHz FSB, DDRII 667/533 memory up to 2GB. In addition, the housing of Ruggcore series takes aluminum chassis to construct a strong mechanical structure for any harsh industrial applications.

#### Key Features

- Intel Celeron M & Core 2 Duo Process
- Fan-less
- Wide Input Voltage DC 9~36V
- Ruggedized Housing Design

#### Application

- Machine Controller
- Factory Automation
- Marine
- Transportation



## Specifications

V1

<b>Model Number</b>	<b>REC3425</b>
<b>Description</b>	Intel Core 2 Duo Fan-less Embedded Controller
<b>Processor</b>	Intel® Core 2 Duo / Celeron M
<b>Chip Set</b>	Intel® 945GME + ICH-7M
<b>System Memory</b>	DDRII SODIMM x 1, Max. 2GB (DDRII 400/533/667)
<b>Ethernet</b>	Intel® 82573, 10/100/1000Base-TX, RJ-45 x 1
<b>Storage</b>	SATA HDD x1, Compact Flash x1
<b>Audio</b>	Line-Out, MIC-In
<b>I/O Interface- Front</b>	PS/2 Keyboard & Mouse, RJ45 x1, USB x2, COM (RS232)x1, VGA x1
<b>I/O Interface- Rear</b>	Audio Phone Jack (Line-out, MIC-in), USBx2, COMx1 (RS232/422/485 x1), DC Input
<b>BIOS</b>	Award Plug & Play BIOS - 1MB ROM
<b>Wake On LAN</b>	Yes
<b>Extension Interface</b>	Mini PCI x 1
<b>Power Supply</b>	+12V or +9~36V Wide Range DC Input (optional)
<b>Display</b>	
<b>Chip Set</b>	Intel® 945GME Integrated
<b>Memory</b>	Shared system memory up to 224MB/ DVMT3.0
<b>Resolutions</b>	Up to 2048 x 1536 @ 32bpp for CRT
<b>Mechanical</b>	
<b>Construction</b>	Rugged Aluminum Alloy Chassis
<b>Mounting</b>	Wall Mount, Desktop
<b>Dimension</b>	196(W) x 64(H) x 150 (D) mm
<b>Net Weight</b>	2.3kg
<b>Environmental</b>	
<b>Operating Temperature</b>	15°C ~ 50°C (5°F ~ 122°F)
<b>Storage Temperature</b>	-20°C~70°C (-4°F~158°F)
<b>Operating Humidity</b>	5~90% @ 40°C, non-condensing
<b>Vibration</b>	1g rms / 5~500Hz / random operation
<b>Shock</b>	20G peak acceleration (11msec. duration)
<b>Certification</b>	CE/FCC

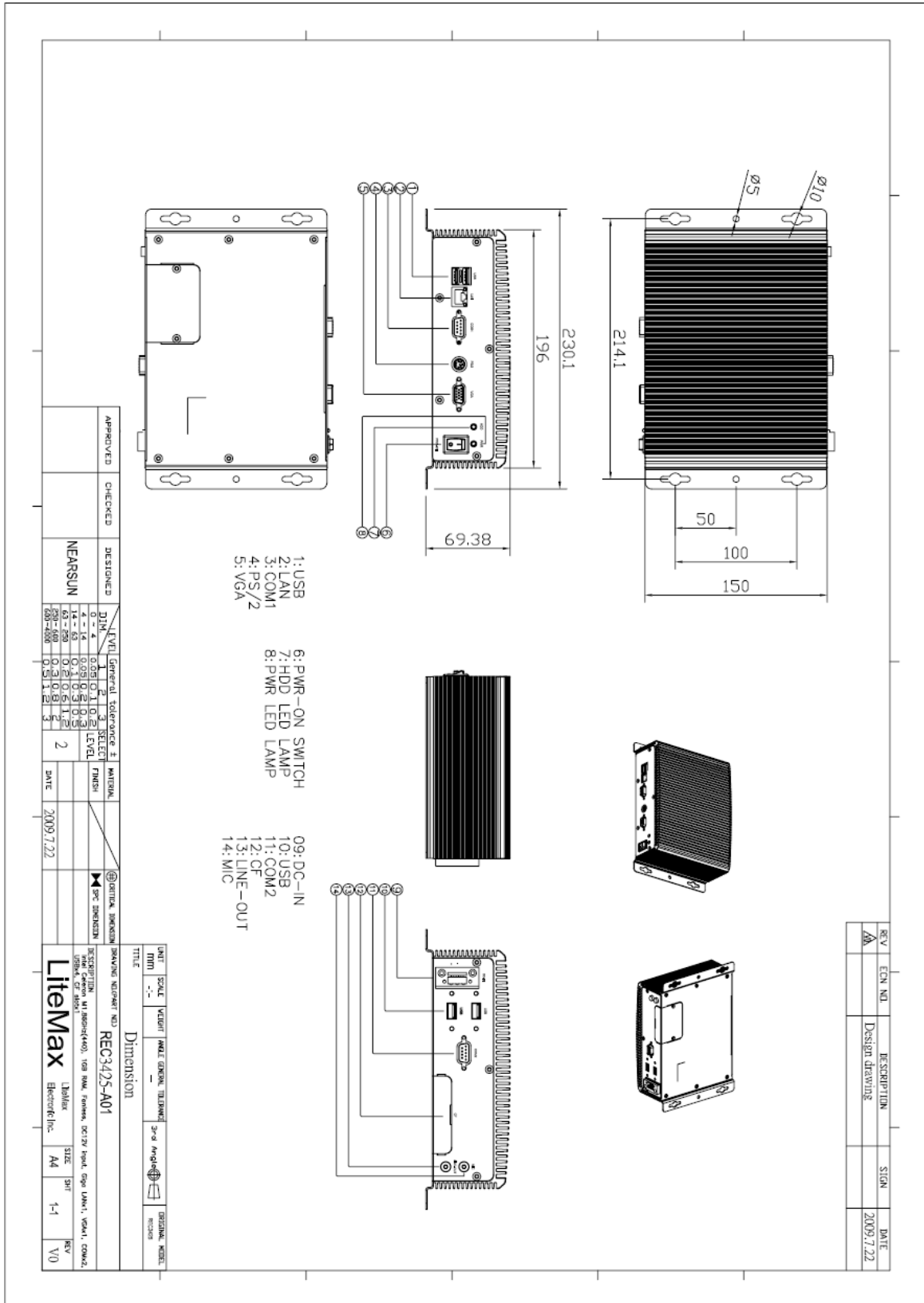
Specifications are subject to change without notice.

All brands or product names are trademarks or registered trademarks of their respective companies.

# Mechanical Drawing

## Outline Dimensions

Unit:mm





### Ordering Information

Part Number	Description
REC3425-A01	Intel Celeron M 1.86GHz(440).1GB RAM,Fanless,DC 12V input.Giga LAN*1,VGA*1,COM*2,USB*4,CF slot*1
REC3425-A02	Intel Core2Duo 1.5GHz(L7400).1GB RAM,Fanless,Giga LAN*1,VGA*1,COM*2,USB*4,CF slot*1.DC9~36V input,v01

### Optional Accessories

Part Number	Description
810618301015	Power Cable USA Type
810618301115	Power Cable UK Type
810618301145	Power Cable Australia Type
810618301070	Power Cable Europe Type
840612073000	ADAPTER,12V,7.0A84W.LE-0316B120084.NLE-0316BS12V-AE