

REC3425

Intel Core 2 Duo Fan-less Embedded Controller

REC3425 is a ruggedized industrial solution, which provides extreme reliable functions, scalable processing efficiency, stackable chassis extension, rich I/O features and flexible industrial design. Ruggcore fan-less embedded computer supports Intel Core 2 Duo/ Celeron M processor with 533/667MHz FSB, DDRII 667/533 memory up to 2GB. In addition, the housing of Ruggcore series takes aluminum chassis to construct a strong mechanical structure for any harsh industrial applications.

Key Features

- Intel Celeron M & Core 2 Duo Process
- Fan-less
- Wide Input Voltage DC 9~36V
- Ruggedized Housing Design

Application

- Machine Controller
- Factory Automation
- Marine
- Transportation



Specifications

V1

Model Number	REC3425
Description	Intel Core 2 Duo Fan-less Embedded Controller
Processor	Intel® Core 2 Duo / Celeron M
Chip Set	Intel® 945GME + ICH-7M
System Memory	DDRII SODIMM x 1, Max. 2GB (DDRII 400/533/667)
Ethernet	Intel® 82573, 10/100/1000Base-TX, RJ-45 x 1
Storage	SATA HDD x1, Compact Flash x1
Audio	Line-Out, MIC-In
I/O Interface- Front	PS/2 Keyboard & Mouse, RJ45 x1, USB x2, COM (RS232)x1, VGA x1
I/O Interface- Rear	Audio Phone Jack (Line-out, MIC-in), USBx2, COMx1 (RS232/422/485 x1), DC Input
BIOS	Award Plug & Play BIOS - 1MB ROM
Wake On LAN	Yes
Extension Interface	Mini PCI x 1
Power Supply	+12V or +9~36V Wide Range DC Input (optional)
Display	
Chip Set	Intel® 945GME Integrated
Memory	Shared system memory up to 224MB/ DVMT3.0
Resolutions	Up to 2048 x 1536 @ 32bpp for CRT
Mechanical	
Construction	Rugged Aluminum Alloy Chassis
Mounting	Wall Mount, Desktop
Dimension	196(W) x 64(H) x 150 (D) mm
Net Weight	2.3kg
Environmental	
Operating Temperature	-15°C ~ 55°C (5°F ~ 131°F) -CFD
Storage Temperature	-20°C~70°C (-4°F~158°F)
Operating Humidity	5~90% @ 40°C, non-condensing
Vibration	1g rms / 5~500Hz / random operation
Shock	20g peak acceleration (11msec. duration)
Certification	CE/FCC

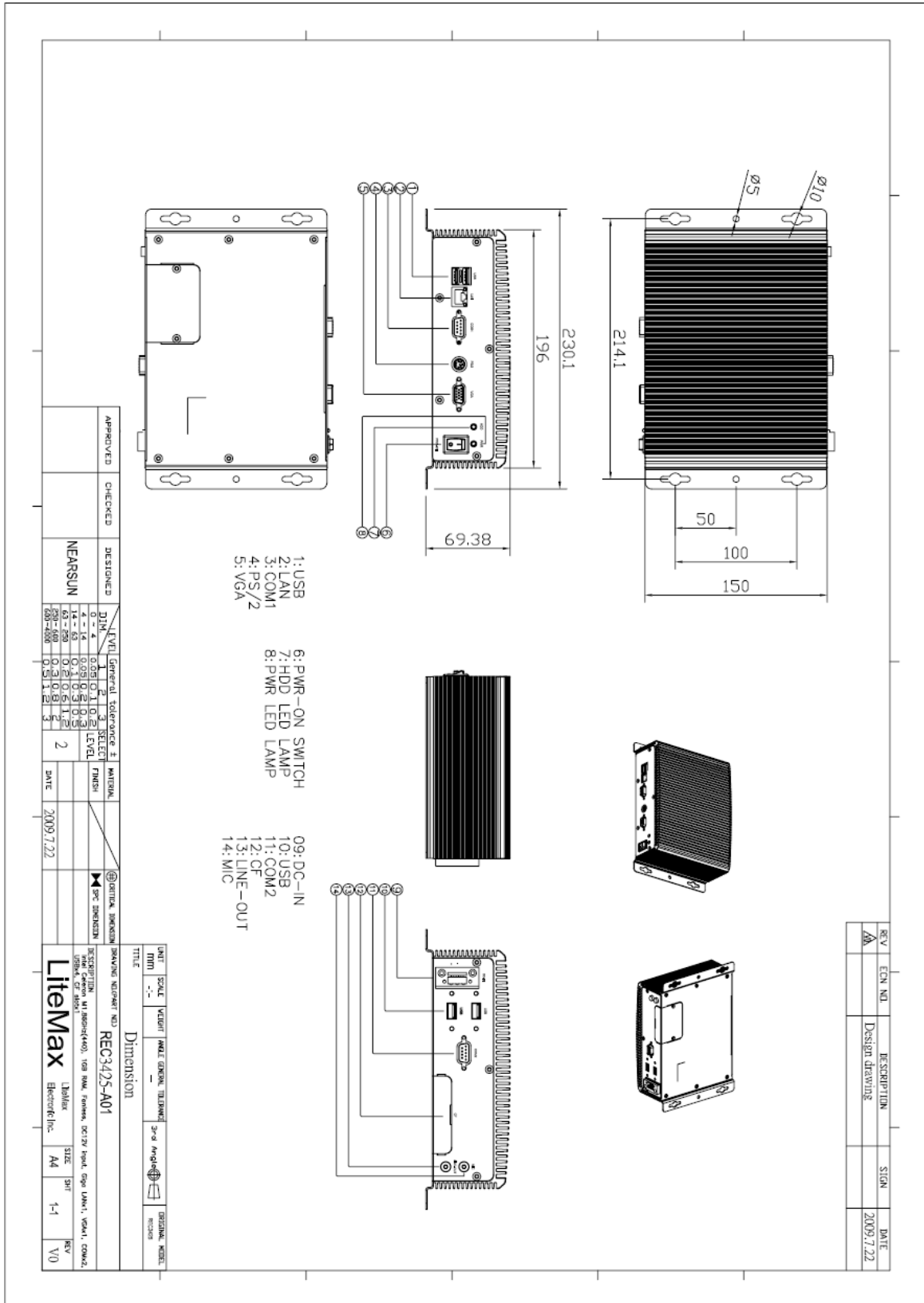
Specifications are subject to change without notice.

All brands or product names are trademarks or registered trademarks of their respective companies.

Mechanical Drawing

Outline Dimensions

Unit:mm



Ordering Information

Part Number	Description
REC3425-A01	Intel Celeron M 1.86GHz(440).1GB RAM,Fanless,DC 12V input.Giga LAN*1,VGA*1,COM*2,USB*4,CF slot*1
REC3425-A02	Intel Core2Duo 1.5GHz(L7400).1GB RAM,Fanless,Giga LAN*1,VGA*1,COM*2,USB*4,CF slot*1.DC9~36V input,v01

Optional Accessories

Part Number	Description
810618301015	Power Cable USA Type
810618301115	Power Cable UK Type
810618301145	Power Cable Australia Type
810618301070	Power Cable Europe Type
840612073000	ADAPTER,12V,7.0A84W.LE-0316B120084.NLE-0316BS12V-AE