

REC3424

Intel D410/D510 1.66GHz Processor Fan-less Embedded Controller

REC3424 is a ruggedized industrial solution, which provides extreme reliable functions, low power consumption, rich I/O features and flexible industrial design.

Ruggcore fan-less embedded computer supports Intel D410/D510 1.66GHz processor with 800MHz FSB, DDRII memory up to 2GB. In addition, the housing of Ruggcore series takes aluminum chassis to construct a strong mechanical structure for any harsh industrial applications.

Key Features

- Intel D410/D510 1.66GHz Process on Board
- Low Power Consumption
- Fan-less
- Wide Input Voltage
- Ruggedized Housing Design

Application

- Machine Controller
- Factory Automation
- Marine
- Transportation



Specifications

Preliminary

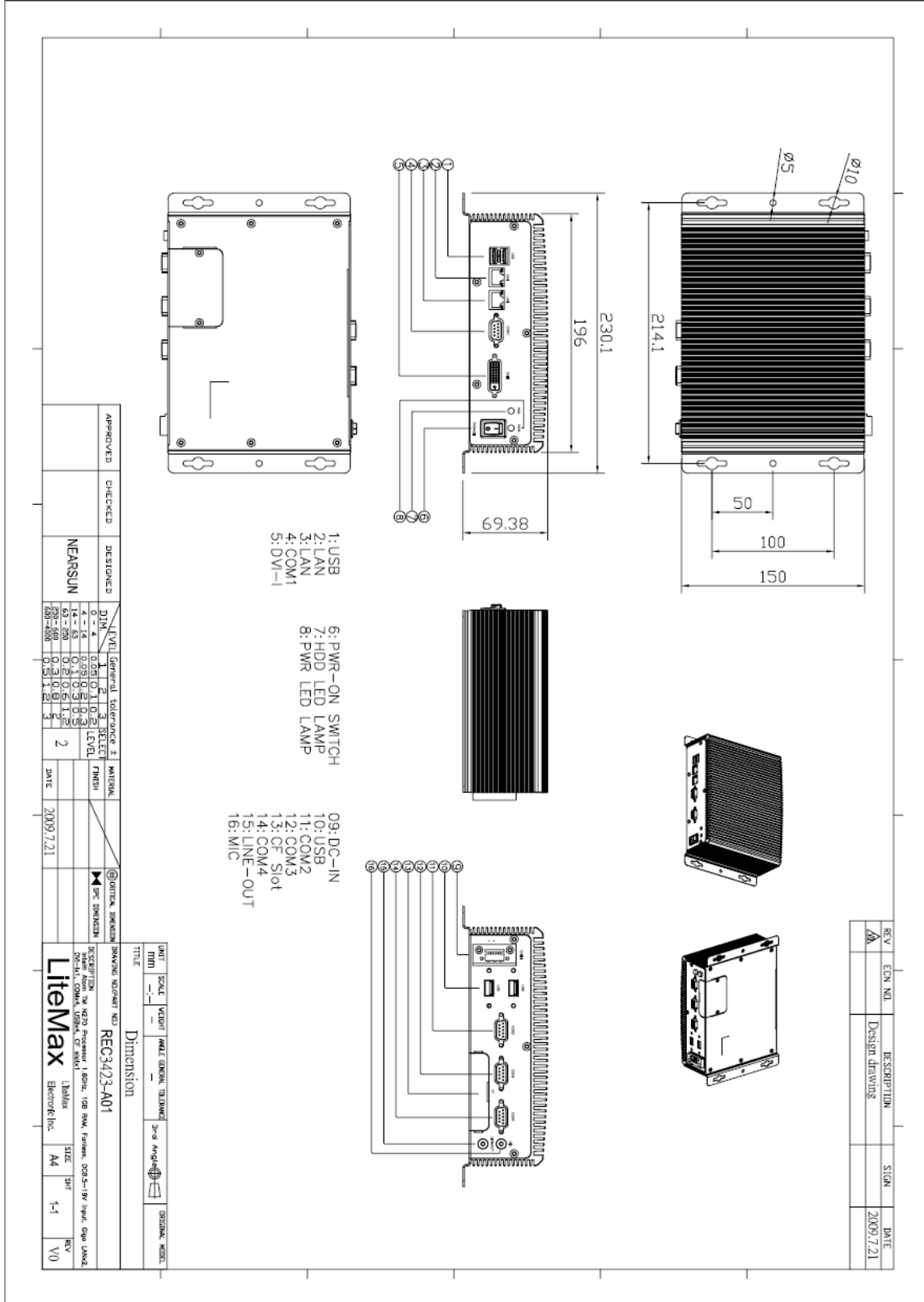
Model Number	REC3424
Description	Intel D410 / D510 Processor Fan-less Embedded Controller
Processor	On board Intel® Atom D410 / D510 Processor 1.66GHz, FSB 800MHz
Chip Set	Intel® ICH8M
System Memory	200-pin DDRII SODIMM x1, Max. 2GB (DDRII 667)
Ethernet	Intel 82567V and 82583V Gigabit, RJ-45 x 2
Storage	SATA II HDD x 1, Type II Compact Flash™ x 1
Audio	Realtek ALC888 HD Audio CODEC, MIC-In/ Line-In/ Line-out
I/O Interface- Front	RJ45 x2, USB x2, COM (RS232)x1, VGAx1
I/O Interface- Rear	Audio Phone Jack (Line-out, MIC-in), USBx2, COMx3 (RS232 x2, RS232/422/485 x1), DC-In
BIOS	AMI BIOS – 2MB ROM
Wake On LAN	No
Extension Interface	Mini Card x2
Power Supply	12V or 9~36V Wide DC Input (option)
Display	
Chip Set	Integrated graphics in processor
Memory	Shared system memory up to 224MB/ DVMT3.0
Resolutions	1920 x 1440 for D410/D510
Mechanical	
Construction	Rugged Aluminum Alloy Chassis
Mounting	Wall Mount, Desktop
Dimension	196(W) x 64(H) x 150 (D) mm
Net Weight	2.3kg
Environmental	
Operating Temperature	-15°C ~ 50°C (5°F ~ 122°F)
Storage Temperature	-20°C~70°C (-4°F~158°F)
Operating Humidity	5~90% @ 40°C, non-condensing
Vibration	1g rms / 5~500Hz / random operation
Shock	20G peak acceleration (11msec. duration)
Certification	CE/FCC

Specifications are subject to change without notice.

Mechanical Drawing

Outline Dimensions

Unit:mm



Ordering Information



Part Number	Description
REC3423-A01	Intel Atom™ N270 Processor.1.6GHz,1GB RAM,Fanless.DC 8.5~19V input,Giga LAN*2.DVI*1,COM*4,USB*4,CF slot*1
REC3423-A03	Onboard Intel Atom™ N270.Proccrss 1.6GHz,1GB RAM.HDD/250GB,Fanless.DC 9~36V input,Giga LAN*2.VGA*1,COM*4,USB*4,CF slot*1

Optional Accessories

Part Number	Description
810218001020	DVI-I to DVI-D & DVI-I to VGA Port Y Cable
810618301015	Power Cable USA Type
810618301115	Power Cable UK Type
810618301145	Power Cable Australia Type
810618301070	Power Cable Europe Type
840612073000	ADAPTER,12V,7.0A84W.LE-0316B120084.NLE-0316BS12V-AE