

REC3423

Intel N270 1.6GHz Processor Fan-less Embedded Controller

REC3423 is a ruggedized industrial solution, which provides extreme reliable functions, low power consumption, rich I/O features and flexible industrial design.

Ruggcore fan-less embedded computer supports Intel N270 1.6GHz processor with 533MHz FSB, DDRII memory up to 2GB. In addition, the housing of Ruggcore series takes aluminum chassis to construct a strong mechanical structure for any harsh industrial applications.

Key Features

- Intel N270 1.6GHz Process on Board
- Low Power Consumption
- Fan-less
- Wide Input Voltage
- Ruggedized Housing Design

Application

- Machine Controller
- Factory Automation
- Marine
- Transportation



Specifications

V1

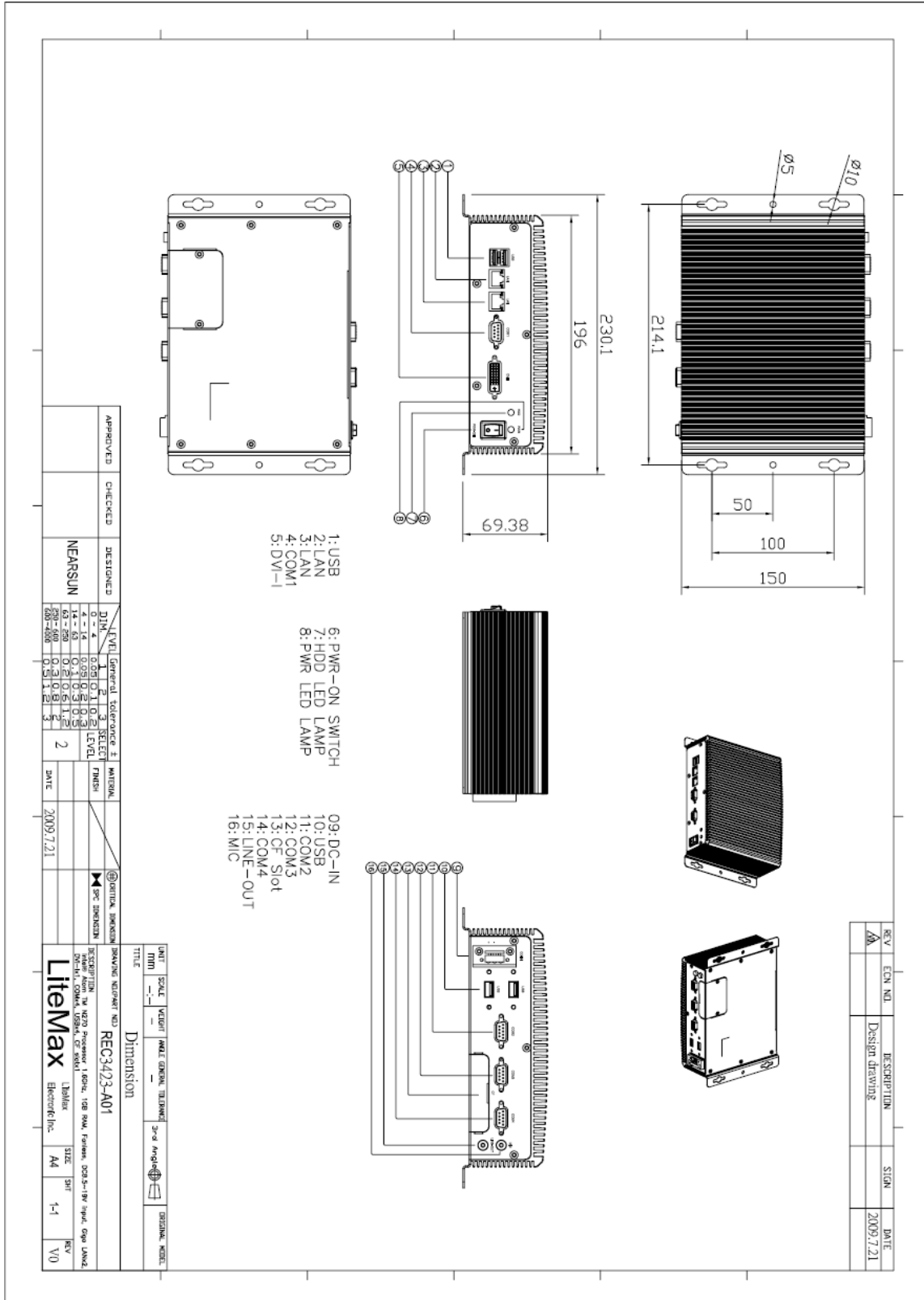
Model Number	REC3423
Description	Intel N270 1.6GHz Processor Fan-less Embedded Controller
Processor	On board Intel® Atom N270 Processor 1.6GHz, FSB 533MHz
Chip Set	Intel® 945GSE + ICH7M
System Memory	200-pin DDRII SODIMM x1, Max. 2GB (DDRII 400/533)
Ethernet	Intel® 82574L, 10/100/1000Base-TX, RJ-45 x 2
Storage	SATA II HDD x 1, Type II Compact Flash™ x 1
Audio	Line-Out, MIC-in
I/O Interface- Front	RJ45 x2, USB x2, COM (RS232)x1, DVI-Ix1
I/O Interface- Rear	Audio Phone Jack (Line-out, MIC-in), USBx2, COMx3 (RS232 x2, RS232/422/485 x1), DC-In
BIOS	Award Plug & Play SPI BIOS - 2MB Flash
Wake On LAN	No
Extension Interface	Mini PCI x1
Power Supply	+8.5V to +19V Wide DC Input
Display	
Chip Set	Intel 945GSE Integrated
Memory	Shared system memory up to 224MB/ DVMT3.0
Resolutions	Up to 2048 x 1536 @ 32bpp colors for CRT
Mechanical	
Construction	Rugged Aluminum Alloy Chassis
Mounting	Wall Mount, Desktop
Dimension	196(W) x 64(H) x 150 (D) mm
Net Weight	2.3kg
Environmental	
Operating Temperature	-15°C ~ 50°C (5°F ~ 122°F)
Storage Temperature	-20°C~70°C (-4°F~158°F)
Operating Humidity	5~90% @ 40°C, non-condensing
Vibration	1g rms / 5~500Hz / random operation
Shock	20G peak acceleration (11msec. duration)
Certification	CE/FCC

Specifications are subject to change without notice.
 All brands or product names are trademarks or registered trademarks of their respective companies.

Mechanical Drawing

Outline Dimensions

Unit:mm





Ordering Information

Part Number	Description
REC3423-A01	Intel Atom™ N270 Processor.1.6GHz,1GB RAM,Fanless.DC 8.5~19V input,Giga LAN*2.DVI*1,COM*4,USB*4,CF slot*1
REC3423-A03	Onboard Intel Atom™ N270.Procrss 1.6GHz,1GB RAM.HDD/250GB,Fanless.DC 9~36V input,Giga LAN*2.VGA*1,COM*4,USB*4,CF slot*1

Optional Accessories

Part Number	Description
810218001020	DVI-I to DVI-D & DVI-I to VGA Port Y Cable
810618301015	Power Cable USA Type
810618301115	Power Cable UK Type
810618301145	Power Cable Australia Type
810618301070	Power Cable Europe Type
840612073000	ADAPTER,12V,7.0A84W.LE-0316B120084.NLE-0316BS12V-AE